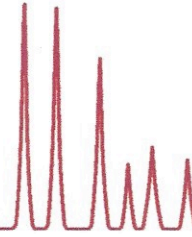




**LABORATORY
REPORT
1923801**



Scenic Root Winegrowers, LLC
Attn: Jonathan Pey
Post Office Box 912
San Anselmo, CA 94960

Samples Received
31 August 2023 12:06 pm

Analysis Reported
31 August 2023 5:31 pm

Analyte	Result	Analysis Date	Method Reference
308310353	2021 Bogle Family Vineyards California Cabernet Sauvignon 750mL		
free sulfur dioxide	26 mg/L	8/31/23	A2LA Accredited Test - SOP# A024
molecular sulfur dioxide	0.29 mg/L	8/31/23	A2LA Accredited Test - SOP# A024
total sulfur dioxide	70 mg/L	8/31/23	A2LA Accredited Test - SOP# A024
titratable acidity	5.6 g/L	8/31/23	A2LA Accredited Test - SOP# A022
pH	3.76	8/31/23	A2LA Accredited Test - SOP# A022
volatile acidity (acetic acid)	0.54 g/L	8/31/23	A2LA Accredited Test - SOP# A006
L-malic acid	0.10 g/L	8/31/23	A2LA Accredited Test - SOP# A011
glucose + fructose	3.2 g/L	8/31/23	A2LA Accredited Test - SOP# A012
ethanol at 20C	14.52 % vol	8/31/23	A2LA Accredited Test - SOP# A022
ethanol at 60F	14.47 % vol	8/31/23	A2LA Accredited Test - SOP# A022
308310354	2021 Jam Cellars Butter California Chardonnay 750mL		
free sulfur dioxide	28 mg/L	8/31/23	A2LA Accredited Test - SOP# A024
molecular sulfur dioxide	0.46 mg/L	8/31/23	A2LA Accredited Test - SOP# A024
total sulfur dioxide	81 mg/L	8/31/23	A2LA Accredited Test - SOP# A024
titratable acidity	4.9 g/L	8/31/23	A2LA Accredited Test - SOP# A022
pH	3.59	8/31/23	A2LA Accredited Test - SOP# A022
volatile acidity (acetic acid)	0.57 g/L	8/31/23	A2LA Accredited Test - SOP# A006
L-malic acid	0.16 g/L	8/31/23	A2LA Accredited Test - SOP# A011
glucose + fructose	4.8 g/L	8/31/23	A2LA Accredited Test - SOP# A012
ethanol at 20C	14.87 % vol	8/31/23	A2LA Accredited Test - SOP# A022
ethanol at 60F	14.82 % vol	8/31/23	A2LA Accredited Test - SOP# A022